

SOLTIS

Serge Ferrari

**Prati**  
*Selection*



SOLTIS  
92

Serge Ferrari

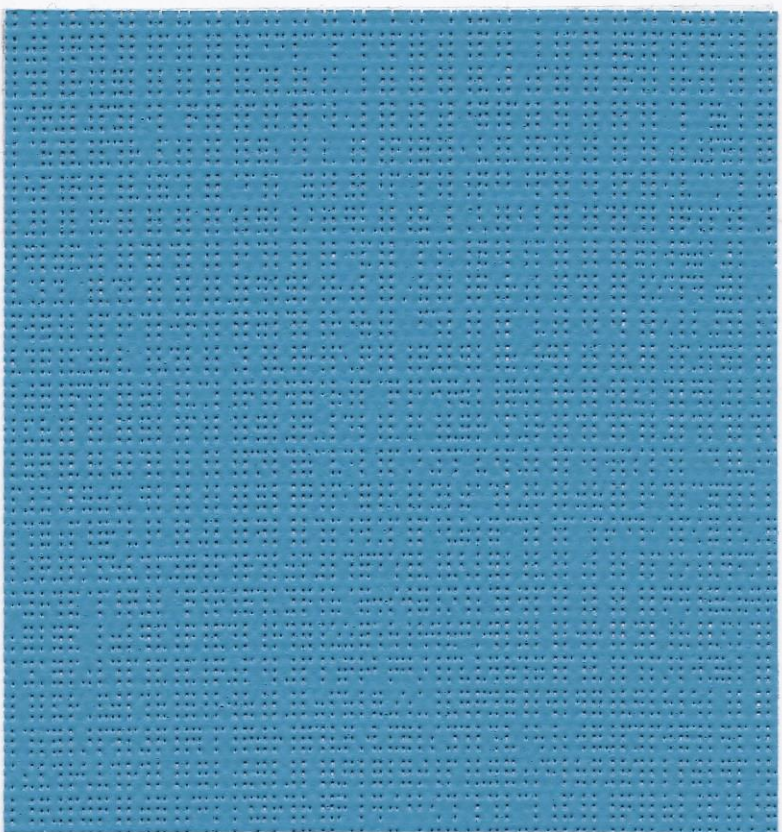
**Prati**  
*Selection*

# SOLTIS

92

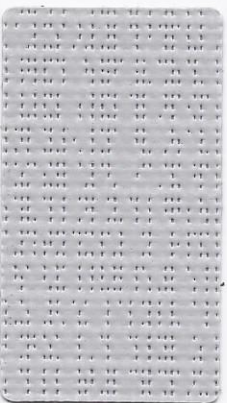
Serge Ferrari

**ProTic**  
Selection



92-2160

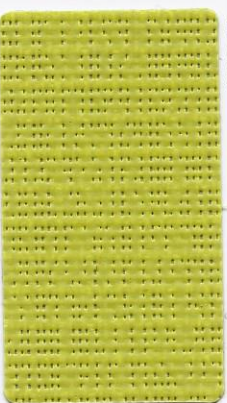
LAGOON



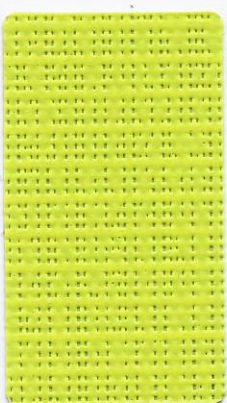
92-2065 **NF** GRIGIO IRIDESCENTE



92-2039 **NF** VERDE PINO



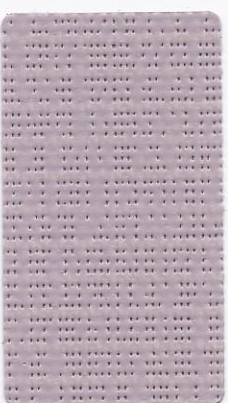
92-50333 BAMBU



92-2157 ANICE



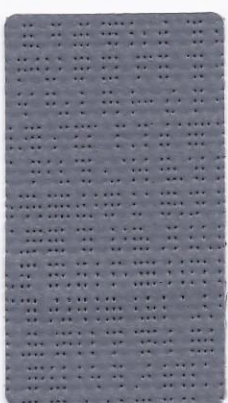
92-2172 CAROTA



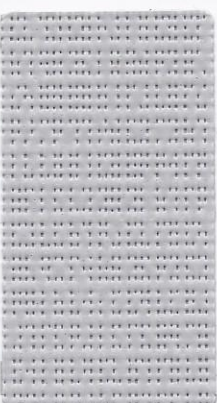
92-2163 TORTORA



92-2044 **NF** BIANCO  
92-3044\*



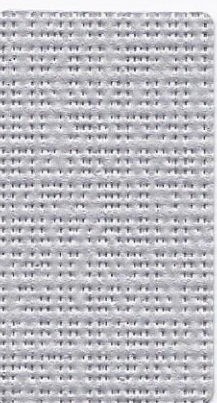
92-2167 **NF** GRIGIO CANNA DI FUCILE  
92-3167\*



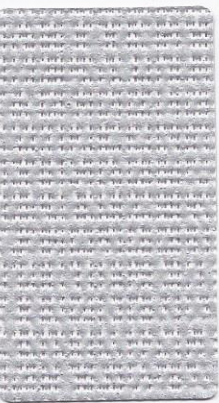
92-2171 **NF** GRIGIO PIETRA  
92-3171\*



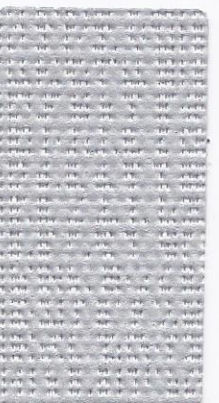
92-50272 GRIGIO NUVOLE



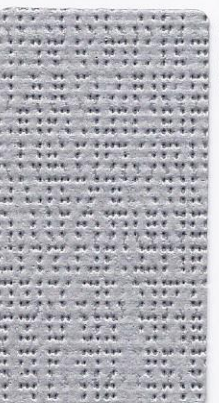
92-2048 **NF** ALLUMINIO/ALLUMINIO  
92-3048\*



92-2046 **NF** ALLUMINIO/GREGGIO  
92-3046\*



92-2051 **NF** ALLUMINIO/BIANCO  
92-3051\*



92-2074 **NF** ALLUMINIO/GRIGIO MEDIO

\*Disponibile in altezza 267 cm / \*Available in 267 cm width / \*In Breite 267 cm erhältlich / \*Disponibile en laize 267 cm

# SOLTIS

92

Serge Ferrari

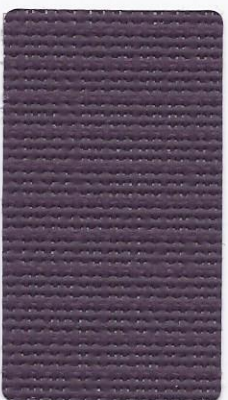
**Profi**  
Selection



92-8204 ARANCIONE



92-2166 BOTTON D'ORO



92-50336 PRUGNA



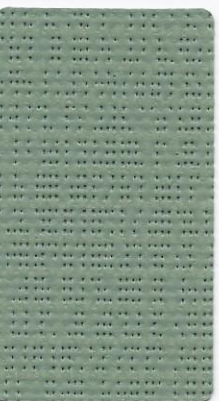
92-50268 MELOGRANO



92-50269 HAWAII



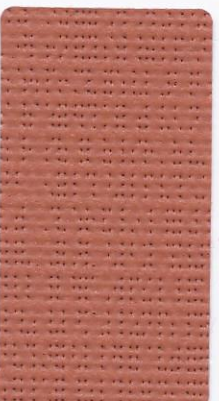
92-2149 VERDE COLEOTTERO



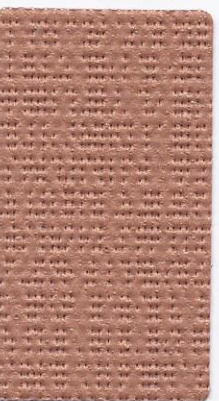
92-2158 VERDE MUSCHIO



92-50271 TURCHESE INTENSO



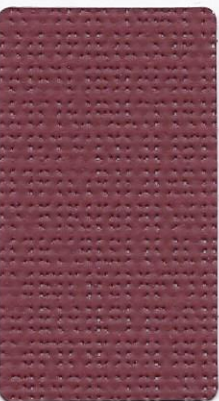
92-50261 CARAMELLO



92-50274 RAME



92-50273 ORO



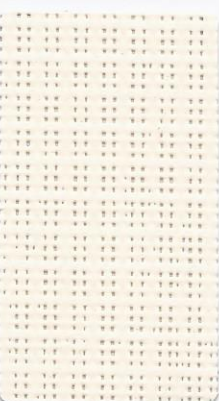
92-50260 CARMINIO



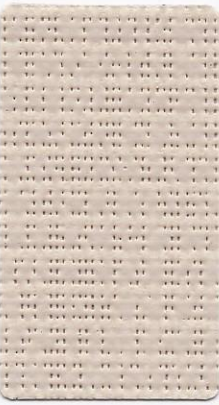
92-2137 NOCE



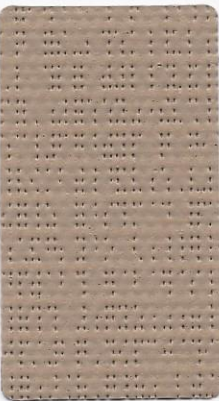
92-2043  BRONZO



92-2175 CHAMPAGNE



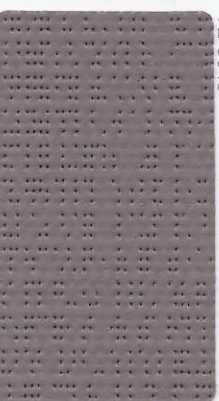
92-50265  
92-50265\* CANAPA



92-2012 NOCCIOLA



92-2135  
92-3135\* SABBIA



92-50266 AVANA



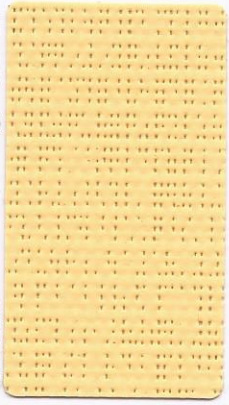
92-2148 CACAO

\*Disponibile in altezza 267 cm / \*\*Available in 267 cm width / \*In Breite 267 cm erhältlich / \*Disponibile en laize 267 cm

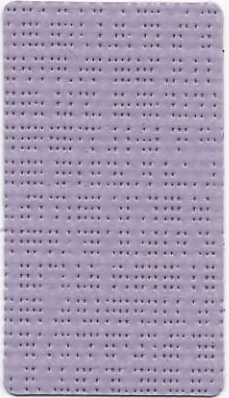
# SOLTIS 92

Serge Ferrari

**Protic**  
*Selection*



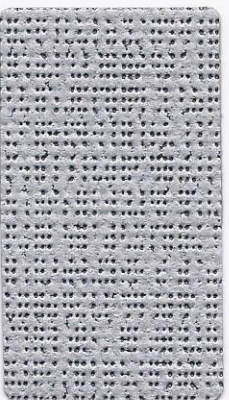
92-2013 **NF** PULCINO



92-2164 LILLA



92-50267 TERRACOTTA



92-2068 ALLUMINIO/ANTRACITE



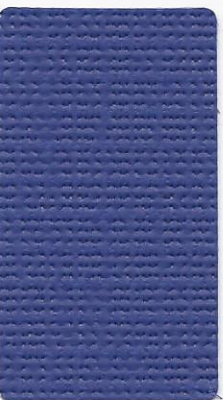
92-8255 ROSSO



92-2152 ROSSO VELLUTO



92-2047 **NF** ANTRACITE  
92-3047\*



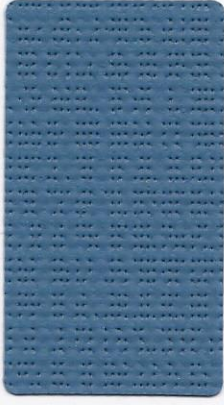
92-2161 BLU NOTTE



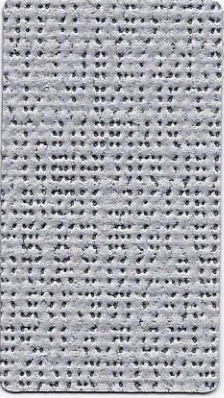
92-50342 BLU MARINO



92-2053 **NF** NERO  
92-3053\*



92-50270 BLU ACCIAIO



92-2045 **NF** METALLO MARTELLATO  
92-3045\*



92-50264 BLU PETROLIO

\*Disponibile in altezza 267 cm / \*Available in 267 cm width / \*In Breite 267 cm erhältlich / \*Disponibile en laize 267 cm

# SOLTIS 92

PROPRIETÀ SOLARE E LUCE / SOLAR AND LIGHT PROPERTIES /  
SONNENSCHUTZ- UND LICHTEIGENSCHAFTEN / PROPRIÉTÉS SOLAIRES  
ET LUMIÈRE (EN 14501)

References	TS	RS	AS	TV n-h	TV n-n	g <sub>ext</sub> <sup>e</sup>	g <sub>int</sub> <sup>i</sup>	NCS Codification
92-2012	7	30	63	6	5	0.08	0.46	S 4010 Y 30 R
92-2013	18	57	25	16	4	0.14	0.38	S 0540 Y 10 R
92-2039	3	8	89	3	3	0.07	0.53	S 8010 B 90 G
92-2043	2	12	86	2	3	0.06	0.52	-
92-2044	20	70	10	19	5	0.14	0.34	S 0900 N
92-2045	3	35	62	3	3	0.05	0.45	-
92-2046	A	9	48	43	8	3	0.08	0.41
92-2046	B	9	63	28	8	3	0.07	0.36
92-2047	5	8	87	5	4	0.08	0.53	-
92-2048	8	46	46	8	3	0.08	0.41	-
92-2051	A	10	50	40	10	3	0.09	0.40
92-2051	B	9	70	21	9	3	0.07	0.34
92-2053	3	6	91	3	3	0.07	0.54	S 8500 N
92-2065	10	46	44	7	4	0.09	0.41	-
92-2068	A	5	40	55	5	5	0.06	0.43
92-2068	B	5	8	87	5	5	0.08	0.53
92-2074	A	4	38	58	4	3	0.06	0.44
92-2074	B	4	25	71	4	3	0.07	0.48
92-2135	9	46	45	6	4	0.08	0.41	S 2005 Y 50 R
92-2137	3	8	89	3	3	0.07	0.53	S 8010 Y 50 R
92-2148	3	14	83	3	3	0.06	0.51	S 7010 Y 30 R
92-2149	5	16	79	4	4	0.07	0.51	-
92-2152	15	37	49	5	4	0.12	0.45	-
92-2157	15	51	34	10	3	0.12	0.40	S 0575 G 60 Y
92-2158	4	28	68	3	2	0.06	0.47	S 4020 G 30 Y
92-2160	8	36	56	4	3	0.08	0.44	S 2055 B 10 G
92-2161	5	19	76	3	3	0.07	0.49	S 5040 R 80 B
92-2163	9	44	47	4	3	0.08	0.42	S 3010 R 10 B
92-2164	10	45	45	4	3	0.09	0.42	S 3020 R 50 B
92-2166	21	54	29	17	4	0.15	0.39	S 0570 Y 10 R
92-2167	3	19	78	3	3	0.06	0.50	S 6005 R 80 B
92-2171	8	43	49	6	4	0.08	0.42	S 2902 B
92-2172	19	43	38	8	4	0.15	0.43	S 0580 Y 70 R

References	TS	RS	AS	TV n-h	TV n-n	g <sub>ext</sub> <sup>e</sup>	g <sub>int</sub> <sup>i</sup>	NCS Codification
92-2175	19	64	17	16	3	0.13	0.36	S 0505 Y 20 R
92-8204	17	47	36	8	2	0.13	0.41	S 0585 Y 40 R
92-8255	12	28	60	4	3	0.11	0.47	S 1980 Y 90 R
92-50260	5	14	81	4	4	0.07	0.51	S 5040 R
92-50261	15	40	45	6	5	0.12	0.43	S 3050 Y 60 R
92-50264	5	13	82	4	3	0.07	0.51	S 6030 B 30 G
92-50265	9	49	42	6	3	0.08	0.40	S 2010 Y 20 R
92-50266	4	19	77	4	3	0.07	0.50	S 6005 Y 50 R
92-50267	6	27	67	3	3	0.08	0.47	S 4040 Y 90 R
92-50268	16	37	47	5	4	0.13	0.44	S 2055 R 10 B
92-50269	9	35	56	5	3	0.09	0.45	S 2050 B 40 G
92-50270	4	18	78	3	3	0.07	0.50	S 5030 B
92-50271	8	38	54	2	2	0.08	0.44	-
92-50272	12	56	32	9	3	0.10	0.38	S 1502 B
92-50273	8	42	50	5	3	0.08	0.43	-
92-50274	8	35	57	4	3	0.08	0.45	-
92-50333	11	37	52	7	3	0.10	0.44	S 2070 G 70 Y
92-50336	7	18	75	3	3	0.08	0.50	S 7020 R 30 B
92-50342	6	10	84	4	4	0.08	0.52	S 2020 R 80 B

TS: Solar Transmission (%)  
RS: Solar Reflection (%)  
AS: Solar Absorption (%)  
TV n-h: Normal hemispherical visible light transmission (%)  
TV n-n: Normal normal visible light transmission (%)  
g<sub>ext</sub><sup>e</sup>: External Solar Factor  
g<sub>int</sub><sup>i</sup>: Internal Solar Factor  
Type "C" glazing: insulating, slightly emissive double glazing in position 3 (4+16+4; argon-filled).

A: Aluminium face exposed to the sun  
B: Coloured face exposed to the sun

SOLTIS 86

Serge Ferrari

ProTic Selection



# SOLTIS

## 92

Peso tessuto / Weight / Gewicht / Poids (EN ISO 2286-2)	420 g/m <sup>2</sup>
Spessore / Thickness / Stärke / Epaisseur	0,45 mm
Altezza del tessuto / Roll width / Breite / Laize	177-267 cm
Lunghezza rotolo / Roll length / Rollenlänge / Longueur de la pièce	50 m (177 cm altezza / width / Breite / laize) 40 m (267 cm altezza / width / Breite / laize)
Resistenza alla rottura / Breaking strength / Resistenza alla trazione / Resistance à la traction (EN ISO 1421)	ordito / warp / Kette / chaîne: 310 DaN/5 cm trama / weft / Schuss / trame: 210 DaN/5 cm
Resistenza allo strappo / Tear strength / Weißerreißeigigkeit / Résistance à la déchirure (DIN 53363)	ordito / warp / Kette / chaîne: 45 DaN trama / weft / Schuss / trame: 20 DaN
Trattamento fungistatico / Fungistatic treatment / Fungizide Behandlung / Traitement fongistatique (EN ISO 846-A)	Grado / Degree / Grad / Degré 0 eccellente / excellent / ausgezeichnet / excellent
Ignifugazione / Flammability / Entflammbarkeit / Ignifugation	<b>Classe / Rating / Brennverhalten / Classement</b> B1/DIN 4102-1 • BS 7837 • BS 5867 • SCHWERBRENNBAR-O1-TR1/ONORM A 3800-1 CLASSE 1/UNI 9177-87 • M1/JUNE 23.727-90 • VKF 5.2/ SN 198898 • 1530 3/AS/NZS G1/GOST 30244-94 • METHOD 1/IN/FA 701 • CSFM TT19 • CLASS A/ASTM E84 <b>Euroclasse / Euroclass / Euroklasse / Euroclass</b> B-s2, d0/EN 13501-1
Sistema di gestione della qualità / Management systems for Quality / Managementsysteme Qualität / Systemes de management de la qualité	ISO 9001
Sistema di gestione ambientale / Management systems for the Environment / Managementsysteme Umwelt / Systemes de management de l'environnement	ISO 14001

The technical data above are averaged values with a +/- 5% tolerance. The buyer of our products is fully responsible for their application and their transformation with regard to any possible third party. The buyer of our products is responsible for their implementation and installation according to the standards, workmanship and safety regulations in force in destination countries. For information on our contractual warranty, please refer to the relevant terms and conditions. The values quoted above represent results of tests performed in compliance with common design practices and are provided for information only to enable customers to make the best use of our products. Our products are subject to changes based on technical advances and we reserve the right to modify their characteristics at any time. The buyer of our products is responsible for checking the validity of the above data.



### UTILIZZI

- Tende per facciate
- Tende per verande e per lucernari
- Vele di ombreggiatura

### APPLICATIONS

- Façade blinds
- Conservatory and glassroof blinds
- Shadecalls

### ANWENDUNGEN

- Fassadenmarkisen
- Markisen für Wintergarten und Glasdächer
- Sonnensegel

### APPLICATIONS

- Stores de façades
- Stores de verandas et de verrières
- Voiles d'ombrage